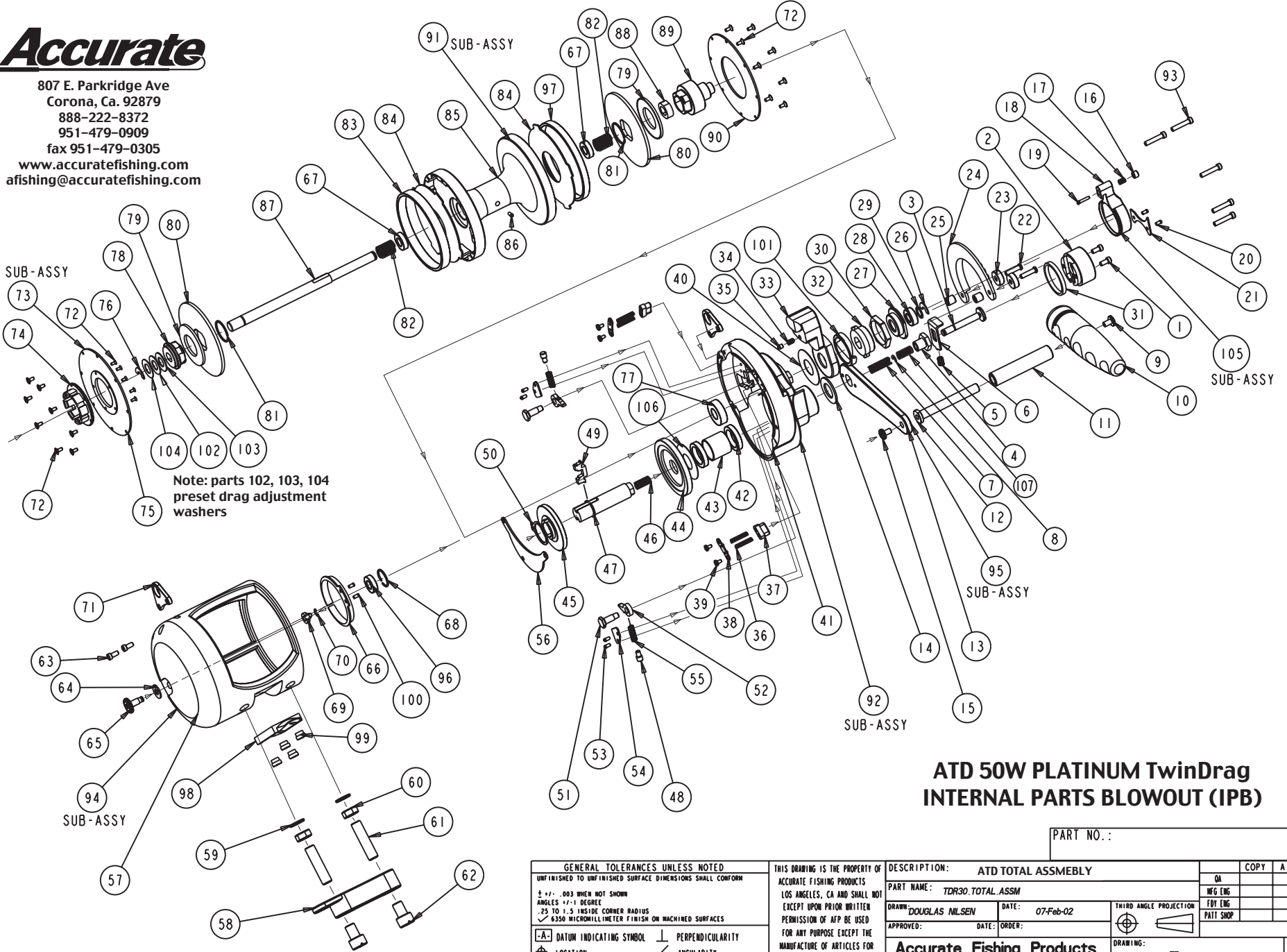


# Accurate

807 E. Parkridge Ave  
 Corona, Ca. 92879  
 888-222-8372  
 951-479-0909  
 fax 951-479-0305  
 www.accuratefishing.com  
 afishing@accuratefishing.com



## ATD 50W PLATINUM TwinDrag INTERNAL PARTS BLOWOUT (IPB)

PART NO.:

|                                                                                                                                                                                                                                        |  |                                                                                                                                                                                                                                                                                                                               |  |                                                                                                                                   |  |                                                                                      |
|----------------------------------------------------------------------------------------------------------------------------------------------------------------------------------------------------------------------------------------|--|-------------------------------------------------------------------------------------------------------------------------------------------------------------------------------------------------------------------------------------------------------------------------------------------------------------------------------|--|-----------------------------------------------------------------------------------------------------------------------------------|--|--------------------------------------------------------------------------------------|
| <b>GENERAL TOLERANCES UNLESS NOTED</b><br>UNFINISHED TO UNFINISHED SURFACE DIMENSIONS SHALL CONFORM<br>± .003 WHEN NOT SHOWN<br>ANGLES ±1-1 DEGREE<br>.25 TO 1.5 INSIDE CORNER RADIUS<br>✓ 4350 MICROMETER FINISH ON MACHINED SURFACES |  | THIS DRAWING IS THE PROPERTY OF ACCURATE FISHING PRODUCTS LOS ANGELES, CA AND SHALL NOT BE REPRODUCED OR COPIED IN ANY MANNER WITHOUT THE WRITTEN PERMISSION OF AFP. THIS PERMISSION IS NOT TO BE USED FOR ANY PURPOSE EXCEPT THE MANUFACTURE OF ARTICLES FOR ACCURATE FISHING PRODUCTS. DRAWING TO BE RETURNED UPON REQUEST. |  | DESCRIPTION: ATD TOTAL ASSEMBLY<br>PART NAME: TOR30 TOTAL ASSM<br>DRAWN: DOUGLAS NILSEN DATE: 07-Feb-02<br>APPROVED: DATE: ORDER: |  | COPY A<br>QA<br>MFG ENG<br>FBT ENG<br>PART SHOP                                      |
| -A- DATUM INDICATING SYMBOL<br>⊕ LOCATION<br>⊙ CONCENTRICITY<br>▭ FLATNESS                                                                                                                                                             |  | ⊥ PERPENDICULARITY<br>∠ ANGULARITY<br>↗ RUNOUT (T.I.R.)<br>∥ PARALLELISM                                                                                                                                                                                                                                                      |  | THIRD ANGLE PROJECTION<br>                                                                                                        |  | Accurate Fishing Products<br>Los Angeles, CA<br>VENDOR: AGM<br>SCALE: 0.50<br>SHEET: |

### ATD 50W BOM

| No. | COMPONENT NAME                      | QTY | PART No. | Retail   | No. | COMPONENT NAME                | QTY | PART No. | Retail   |
|-----|-------------------------------------|-----|----------|----------|-----|-------------------------------|-----|----------|----------|
| 1   | GEAR SHIFT COVER SCREW              | 2   | L-1380   | \$0.43   | 54  | ANTI-REVERSE DOG SPRING COVER | 2   | L-846    | \$2.86   |
| 2   | GEAR SHIFT COVER                    | 1   | L-790    | \$13.71  | 55  | ANTI-REVERSE DOG SPRING       | 2   | L-1372   | \$2.36   |
| 3   | GEAR SHIFT SHAFT                    | 1   | L-776    | \$7.07   | 56  | GEAR COVER                    | 1   | L-770    | \$5.00   |
| 4   | HANDLE SCREW                        | 1   | L-858    | \$9.90   | 57  | FRAME                         | 1   | L-1066   | \$202.86 |
| 5   | GEAR SHIFT SLIDE SPRING             | 1   | L-1338   | \$3.21   | 58  | ATD BASE CLAMP                | 1   | L-1374   | \$21.94  |
| 6   | GEAR SHIFT SLIDE                    | 1   | L-812    | \$8.57   | 59  | BASE CLAMP STUD WASHER        | 2   | L-1560   | \$0.71   |
| 7   | GEAR SHIFT SHAFT SPRING #1          | 1   | L-7398   | \$1.50   | 60  | BASE CLAMP STUD NUT           | 2   | L-1376   | \$1.43   |
| 8   | GEAR SHIFT SHAFT RETAINER           | 1   | L-1342   | \$0.50   | 61  | BASE CLAMP STUD               | 2   | 750      | \$1.43   |
| 9   | HANDLE PIN SCREW                    | 1   | B-1190   | \$1.03   | 62  | BASE CLAMP SLEEVE NUT         | 2   | L-1378   | \$1.79   |
| 10  | HANDLE KNOB                         | 1   | L-838    | \$35.71  | 63  | FRAME LUG SCREWS C/S          | 2   | L-1380   | \$0.43   |
| 11  | HANDLE KNOB HUB                     | 1   | L-1824   | \$10.07  | 64  | CLICKER KNOB WASHER           | 1   | B-1126S  | \$0.29   |
| 12  | HANDLE KNOB PIN                     | 1   | L-932    | \$7.14   | 65  | CLICKER KNOB                  | 1   | L-319    | \$7.14   |
| 13  | HANDLE ARM                          | 1   | L-922    | \$21.43  | 66  | CLICKER RING                  | 1   | 623      | \$5.71   |
| 14  | HANDLE WASHER                       | 1   | L-866    | \$3.00   | 67  | SPOOL BEARING                 | 2   | L-1536   | \$12.64  |
| 15  | HANDLE ARM SCREW                    | 1   | L-1724   | \$5.00   | 68  | FRAME BEARING RETAINER        | 1   | L-1144   | \$1.26   |
| 16  | PRESET ARM LOCK BUTTON              | 1   | L-870    | \$1.43   | 69  | CLICKER DOG                   | 1   | 36-114   | \$2.14   |
| 17  | PRESET ARM LOCK BUTTON SPRING       | 1   | L-1362   | \$2.14   | 70  | CLICKER DOG RETAINER          | 1   | B-1298   | \$0.29   |
| 18  | PRESET ARM                          | 1   | L-804    | \$21.43  | 71  | FRAME LUGS                    | 2   | L-772    | \$7.50   |
| 19  | PRESET ARM LOCK BUTTON SCREW        | 1   | L-1350   | \$0.71   | 72  | SPOOL COVER SCREWS            | 16  | L-1386   | \$0.43   |
| 20  | PRESET ARM CLIP SCREW               | 2   | L-1352   | \$0.43   | 73  | CLICKER SPOOL COVER SUB-ASSY  | 1   | L-1572   | \$36.09  |
| 21  | PRESET ARM CLIP                     | 1   | L-768    | \$6.21   | 74  | CLICKER PINS                  | 1   | L-868    | \$22.63  |
| 22  | PRESET ARM SUPPORT SCREW            | 2   | L-1354   | \$0.46   | 75  | SPOOL COVER C/S               | 1   | L-890    | \$21.30  |
| 23  | CUSHION STOP                        | 2   | L-774    | \$2.66   | 76  | SPOOL SHAFT RETAINER C/S      | 1   | L-1548   | \$2.51   |
| 24  | PRESET ARM SUPPORT                  | 1   | L-746    | \$28.84  | 77  | GEAR SIDEPLATE BEARING        | 1   | L-1540   | \$14.79  |
| 25  | PRESET ARM SUPPORT SPACER           | 2   | L-930    | \$1.00   | 78  | CLICKER DRAG CAP              | 1   | L-926    | \$22.29  |
| 26  | SPOOL SHAFT RETAINER G/S            | 1   | L-1750   | \$2.44   | 79  | BEVEL WASHER                  | 2   | L-794    | \$10.46  |
| 27  | TENSION CAM BEARING WASHER          | 1   | L-762    | \$9.64   | 80  | TITANIUM DRAG WASHER          | 2   | L-944    | \$53.36  |
| 28  | TENSION CAM BEARING                 | 1   | L-1358   | \$13.64  | 81  | TITANIUM DRAG WASHER RETAINER | 2   | L-1108   | \$0.69   |
| 29  | TENSION CAM RETAINER WASHER         | 1   | L-786    | \$0.50   | 82  | SPOOL SHAFT SPRING            | 2   | L-954    | \$1.40   |
| 30  | TENSION CAM NUT                     | 1   | L-758    | \$19.29  | 83  | FIBER RING C/S                | 1   | L-1166   | \$4.64   |
| 31  | GEAR SHIFT COVER SPACER             | 1   | L-1518   | \$7.14   | 84  | FIBER WASHER                  | 2   | L-940    | \$24.74  |
| 32  | TENSION CAM                         | 1   | L-814    | \$27.51  | 85  | SPOOL                         | 1   | L-902    | \$170.00 |
| 33  | MAIN LEVER ARM                      | 1   | L-920    | \$29.50  | 86  | SPOOL STUD SCREW              | 1   | B-1290   | \$0.20   |
| 34  | MAIN LEVER ARM PIN SPRING           | 1   | L-1362   | \$2.14   | 87  | SPOOL SHAFT                   | 1   | L-918    | \$26.93  |
| 35  | MAIN LEVER ARM PIN                  | 1   | L-1638   | \$0.86   | 88  | PINION BUSHING                | 1   | L-948    | \$7.86   |
| 36  | STRIKE BUTTON SPRING                | 2   | 70080s   | \$1.07   | 89  | PINION GEAR                   | 1   | L-916    | \$71.10  |
| 37  | STRIKE BUTTON                       | 2   | L-832    | \$0.71   | 90  | SPOOL COVER G/S               | 1   | L-888    | \$14.29  |
| 38  | STRIKE BUTTON COVER                 | 2   | L-1050   | \$2.14   | 91  | SPOOL SUB-ASSY                | 1   | L-1856   | \$598.57 |
| 39  | STRIKE BUTTON SCREWS                | 4   | B-1290   | \$0.20   | 92  | SIDEPLATE SUB-ASSY            | 1   | L-1850   | \$678.57 |
| 40  | MAIN LEVER ARM TEFLON WASHER        | 1   | L-792    | \$0.36   | 93  | SIDEPLATE SCREWS              | 5   | L-1336   | \$0.64   |
| 41  | SIDEPLATE                           | 1   | L-1106   | \$168.57 | 94  | FRAME SUB-ASSY                | 1   | L-1854   | \$337.14 |
| 42  | GEAR SHAFT HANDLE BEARING           | 2   | L-1542   | \$21.43  | 95  | HANDLE SUB-ASSY               | 1   | L-1852   | \$65.29  |
| 43  | GEAR SHAFT BEARINGS SPACER          | 1   | L-958    | \$6.07   | 96  | FRAME BEARING                 | 1   | L-1534   | \$14.26  |
| 44  | HIGH SPEED MAIN GEAR 4:1            | 1   | L-862    | \$57.14  | 97  | FIBER RING G/S                | 1   | L-1150   | \$4.29   |
| 45  | LOW SPEED MAIN GEAR 1.7:1           | 1   | L-882    | \$30.43  | 98  | FRAME BASE                    | 1   | L-1002   | \$17.14  |
| 46  | GEAR SHAFT SPRING (INSIDE)          | 1   | L-1400   | \$1.43   | 99  | FRAME BASE SCREWS             | 4   | B-1278   | \$0.21   |
| 47  | GEAR SHAFT                          | 1   | L-810    | \$18.81  | 100 | CLICKER RING SCREWS           | 2   | B-1290   | \$0.20   |
| 48  | ANTI-REVERSE DOG SPRING POST        | 2   | L-1412   | \$2.86   | 101 | TENSION CAM TRACK             | 1   | L-764    | \$11.43  |
| 49  | GEAR SHIFTER                        | 1   | L-766    | \$8.57   | 102 | CLICKER DRAG CAP WASHER .020  | 1   | L-1192   | \$0.64   |
| 50  | GEAR SHIFTER RETAINER               | 1   | L-1370   | \$2.14   | 103 | CLICKER DRAG CAP WASHER .025  | 1   | L-1778   | \$0.64   |
| 51  | ANTI-REVERSE DOG SCREW              | 2   | L-960    | \$7.14   | 104 | CLICKER DRAG CAP WASHER .015  | 1   | L-942    | \$0.64   |
| 52  | ANTI-REVERSE DOG                    | 2   | L-850    | \$16.71  | 105 | PRESET LEVER SUB-ASSY         | 1   | L-1832   | \$25.46  |
| 53  | ANTI-REVERSE DOG SPRING COVER SCREW | 4   | B-1290   | \$0.20   | 106 | SIDEPLATE GEAR WASHER         | 1   | L-2678   | \$0.43   |
|     |                                     |     |          |          | 107 | GEAR SHIFT STOPPER SPRING     | 1   | L-2080   | \$4.29   |